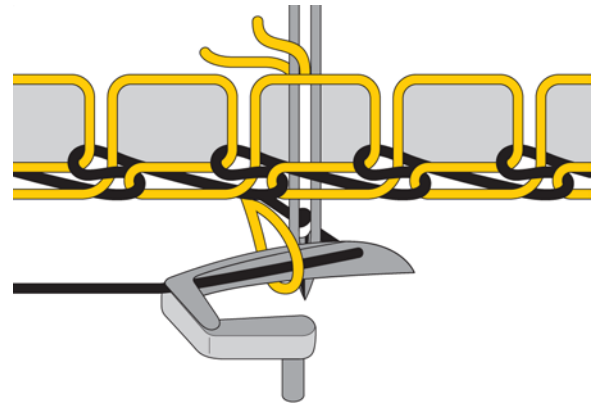




DOUBLE CHAIN STITCH

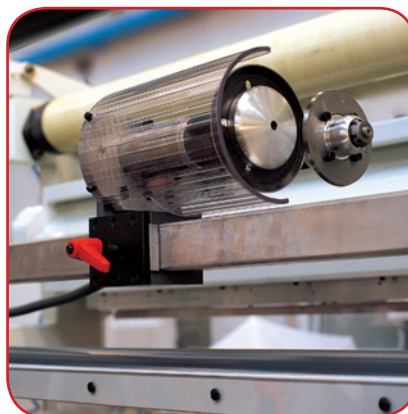


Dimensions:

HERA 100"	Needles	Rows needles	Working width	Corriage stroke	Stitch length	Working Speed
	100 X 3 1" Pitch	3 3" - 6"	cm 254 (100")	mm 305 (12")	mm 1 - 5	1400 s.p.m.



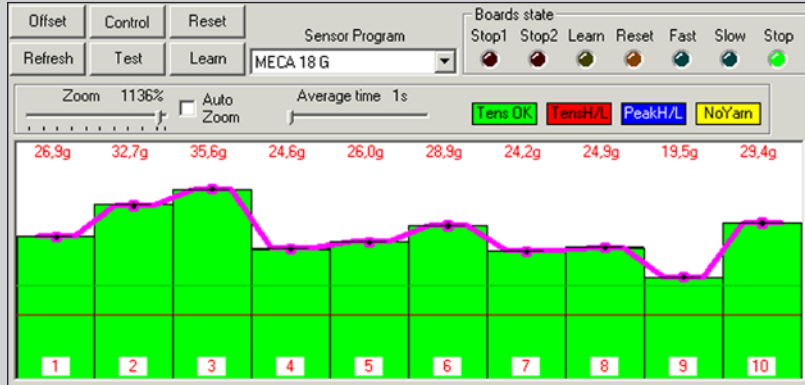
Multi - Cutting Heads
Longitudinal multi-cutting
heads to cut quilted fabric
into stripes



Longitudinal Cutting
Longitudinal cutters to cut
the edges of the quilted
fabric



Cross Cutting
Cross cutting to cut the
quilted fabric into panels



Stop Motion

Integrated yarn brake detectors to stop the quilting machine in case of yarn breaking



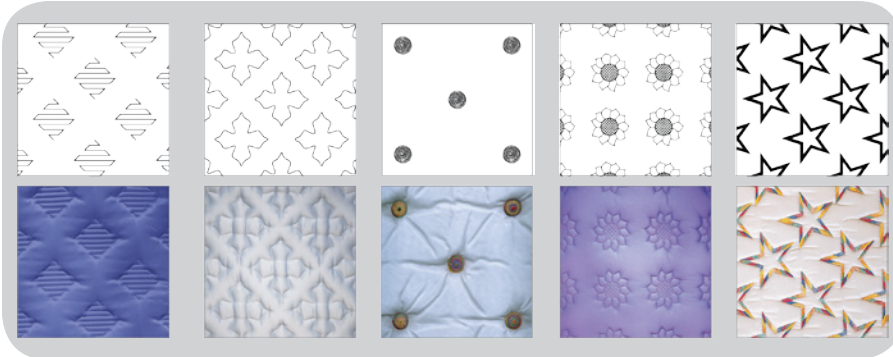
Automatic Stacker

Integrated to the cross cutting device piling-up pre-cut quilted panels. It avoids the painful job of cutting panels from the roll in continuous and optimize the production chain organization.

WSD (Waste Saver Device) , it is the ideal partner of our machines allowing an optimization of the production and a great reduction of the wastes due to frequent material changes. A user friendly interface helps the operator to know in advance type of material and on which roll it should be changed. Such device minimizes time wastes and eliminates any chance of error by the operator. Furthermore the device helps to reduce the wastes of materials between one change of production and the other. From the figure below you can see how the WSD system introduces in the production a minimum crop (purple in the screen below) between one production(blue-green) and the other(violet) minimizing the waste of material. The crop will be then cut automatically by the longitudinal final cutter.

Waste Saver Device®





Jumping + thread trimmer
Meca's solution for thread trimming device is unique and absolutely reliable. This patented system assures a perfect cut using a blade incorporated in the hook which is impossible to break. This special tool reduces to the minimum the top thread tail.

Independent Needle Bars

Hera revolutionises the industry by combining standard quilting, 360° decorative patterns and pattern-link using 3 INDEPENDENT NEEDLE BARS which can perform innumerable panel quilt articles at an unbelievable speed. No single or double head machine can catch up such a productivity. This patented system is the latest Meca's technology available only on Hera machine.

